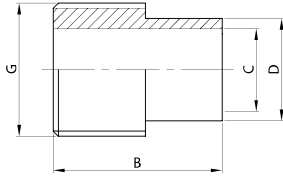




ATT. FILETTATO GAS EL.  
BSP MALE CONNECTION PE.  
PIÈCE FILETÉE GAS  
ROSCA GAS EL.

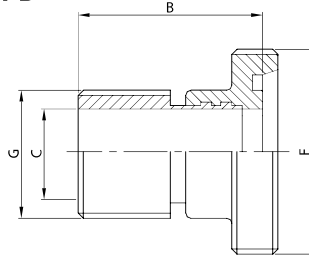
150 L



DN	B	C	D	G	gr
28	30,0	25,0	28,0	1"	45
34	33,0	31,0	34,0	1 1/4"	80
40	38,0	37,0	40,0	1 1/2"	110
52	43,0	49,0	52,0	2"	195
70	50,0	66,0	70,0	2 1/2"	240
85	58,0	81,0	85,0	3"	320
101	75,0	97,6	101,6	4"	850

ATT. FILETTATO GAS + BF. MT.  
BSP MALE CONN. + MP. ED.  
PIÈCE FIL. GAS + NEZ FIL.  
MACHO DIN + M. GAS MD.

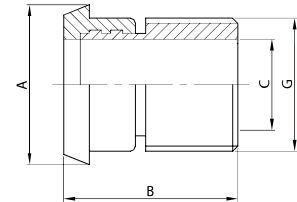
151 D



DN	B	C	F	G	gr
25	37,0	25,0	52-6	1"	177
32	40,0	31,0	58-6	1 1/4"	250
40	44,0	37,0	65-6	1 1/2"	320
50	49,0	49,0	78-6	2"	475
65	57,0	66,0	95-6	2 1/2"	620
80	67,0	81,0	110-4	3"	920
100	84,0	97,6	130-4	4"	1.850

ATT. FILETTATO GAS + BC. MT.  
BSP MALE CONN. + TP. ED.  
PIÈCE FIL. GAS + DOUILLE  
C. DIN + M. GAS MD.

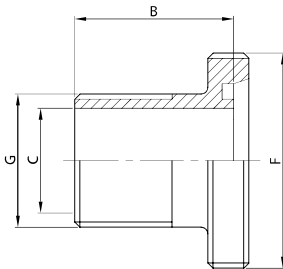
152 D



DN	A	B	C	G	gr
25	44,0	37,0	25,0	1"	130
32	50,0	40,0	31,0	1 1/4"	190
40	56,0	44,0	37,0	1 1/2"	245
50	68,0	49,0	49,0	2"	395
65	86,0	57,0	66,0	2 1/2"	535
80	100,0	67,0	81,0	3"	700
100	121,0	84,0	97,6	4"	1.630

BOCC. FILETTATO EF. GAS  
BSP MALE PART ME.  
ADAPTATEUR NEZ FILETÉ  
MACHO DIN MACHO GAS

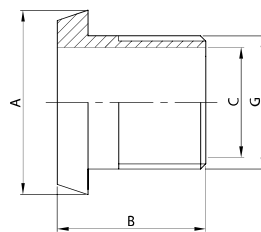
153 D



DN	B	C	F	G	gr
25	43,0	25,0	52-6	1"	177
32	43,0	31,0	58-6	1 1/4"	250
40	43,0	37,0	65-6	1 1/2"	320
50	43,0	49,0	78-6	2"	475
65	44,0	66,0	95-6	2 1/2"	620
80	48,0	81,0	110-4	3"	920
100	46,0	97,6	130-4	4"	1.850

BOCC. CONICO EF. GAS  
BSP TAPER PART ME.  
ADAPTATEUR DOUILLE  
CASQUILLO DIN M. GAS

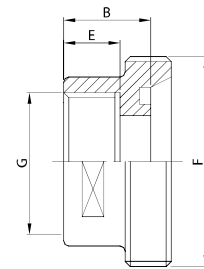
154 D



DN	A	B	C	G	gr
25	44,0	43,0	25,0	1"	130
32	50,0	43,0	31,0	1 1/4"	190
40	56,0	43,0	37,0	1 1/2"	245
50	68,0	44,0	49,0	2"	395
65	86,0	46,0	66,0	2 1/2"	535
80	100,0	46,0	81,0	3"	700
100	121,0	50,0	97,6	4"	1.630

BOCC. FILETT. D.I. FT. GAS  
MALE PART I.D. T. BSP  
ADAPT. NEZ FIL./FEM. GAS  
MACHO DIN HEMBRA GAS

161 D



DN	B	E	F	G	gr
25	24,0	17,0	52-6	1"	220
32	28,0	17,0	58-6	1 1/4"	270
40	28,0	22,0	65-6	1 1/2"	320
50	33,0	22,0	78-6	2"	400
65	34,0	24,0	95-6	2 1/2"	510
80	37,0	27,0	110-4	3"	740
100	42,0	32,0	130-4	4"	1.150